



Iona at Seattle U

12/23/22 SimpliFi Arena at Stan Sheriff Center, Honolulu
2022-23 Men's Basketball

Officials: Don Daily, Nate Harris, Ryan Wells

Iona - 83

Record: 8-4

NO.	Name	Min	FG			Rebounds			Fouls		TP	AS	TO	ST	Blocks		+/-
			M-A	M-A	M-A	OR	DR	TOT	PF	FD					BS	BA	
2	Sadiku Ibine Ayo	F 20:58	3-4	1-1	0-0	2	4	6	5	0	7	1	2	2	0	0	21
13	Nelly Joseph	F 33:38	8-14	0-1	10-14	0	7	7	4	9	26	0	3	2	2	1	7
55	Osborn Shema	F 24:27	4-9	1-5	2-2	0	7	7	2	1	11	1	0	0	4	0	13
1	Walter Clayton Jr.	G 13:39	1-4	0-3	3-3	1	2	3	5	2	5	2	1	0	0	0	18
5	Daniss Jenkins	G 29:36	6-13	2-5	5-6	2	1	3	3	4	19	8	3	0	2	0	14
11	Quinn Slazinski	21:55	3-5	1-3	2-2	1	7	8	1	1	9	2	2	2	1	0	2
23	Michael Jefferson	12:17	0-0	0-0	0-0	1	1	2	4	0	0	0	1	0	0	0	0
3	Cruz Davis	25:44	3-7	0-1	0-0	0	3	3	3	3	6	1	0	1	0	1	-5
12	Anton Brookshire	10:34	0-2	0-0	0-0	0	0	0	1	0	0	1	1	0	0	1	-3
4	Parker Weiss	07:12	0-1	0-1	0-0	0	0	0	3	0	0	0	1	0	0	0	-12
Team						1	1	2			0		1				
Totals			28-59	5-20	22-27	8	33	41	31	20	83	16	15	7	9	3	11

Technical Fouls: NONE

Shooting By Period		
1 st FG%	12-29	41.4%
3PT%	3-11	27.3%
FT%	2-4	50%
2 nd FG%	16-30	53.3%
3PT%	2-9	22.2%
FT%	20-23	87%
GM FG%	28-59	47.5%
3PT%	5-20	25.0%
FT%	22-27	81.5%

Dead Ball Rebounds: 3, 0

Seattle U - 72

Record: 8-4

NO.	Name	Min	FG			Rebounds			Fouls		TP	AS	TO	ST	Blocks		+/-
			M-A	M-A	M-A	OR	DR	TOT	PF	FD					BS	BA	
15	Emeka Udenyi	F 29:23	2-9	0-0	0-2	2	3	5	3	1	4	1	2	1	0	1	-8
25	Brandton Chatfield	F 22:50	4-5	2-3	0-0	0	4	4	5	0	10	1	1	1	1	0	-7
0	Alex Schumacher	G 27:54	3-9	0-1	11-15	2	1	3	3	11	17	3	2	1	0	3	-1
5	Cameron Tyson	G 36:31	6-21	3-12	12-15	0	4	4	1	7	27	1	0	0	0	3	-12
11	Riley Grigsby	G 19:52	1-5	1-3	1-5	0	4	4	0	3	4	2	2	0	1	0	-21
21	Viktor Rajković	20:26	0-2	0-1	4-4	2	1	3	2	3	4	0	0	1	0	0	-4
33	Kobe Williamson	13:43	0-3	0-2	0-0	3	2	5	3	2	0	1	2	0	1	2	-5
35	Matthew Levis	29:21	1-4	0-2	4-4	1	1	2	3	4	6	2	2	1	0	0	3
Team						3	4	7			0		1				
Totals			17-58	6-24	32-45	13	24	37	20	31	72	11	12	5	3	9	-11

Technical Fouls: NONE

Shooting By Period		
1 st FG%	11-31	35.5%
3PT%	3-11	27.3%
FT%	4-10	40%
2 nd FG%	6-27	22.2%
3PT%	3-13	23.1%
FT%	28-35	80%
GM FG%	17-58	29.3%
3PT%	6-24	25.0%
FT%	32-45	71.1%

Dead Ball Rebounds: 8, 1

	Iona	Sea
Biggest lead	14 (1 st 15:08)	0 (1 st 20:00)
Best Scoring Run	12 (2 nd 17:29)	10 (1 st 0:04)
Lead Changes	0	
Times Tied	1	
Time with Lead	39:29	00:00

Points from	Iona	Sea
Turnovers	7	16
Paint	36	22
Second Chance	8	13
Fast Breaks	17	16
Bench	15	10

	Period by Period Scoring		
	1st	2nd	TOT
Iona	29	54	83
Sea	29	43	72



Period 1

Period Starters:

Sea	0 Schumacher A	5 Tyson C	11 Grigsby R	15 Udenyi E	25 Chatfield B
Iona	1 Clayton Jr. W	2 Ibine Ayo S	5 Jenkins D	13 Joseph N	55 Shema O

Game Time	Sea	Score	Diff	Iona
20:00	25 CHATFIELD B jumpball lost			55 SHEMA O jumpball won
19:46		0-3	-3	2 IBINE AYO S 3pt FG , jump shot made (3)
19:46				5 JENKINS D assist (1)
19:13	0 SCHUMACHER A 2pt FG outside the paint, jump shot missed			
19:10				2 IBINE AYO S defensive rebound (1)
19:00				55 SHEMA O 2pt FG outside the paint, jump shot missed
18:56	15 UDENYI E defensive rebound (1)			
18:52	5 TYSON C 3pt FG , jump shot missed			
18:49				55 SHEMA O defensive rebound (1)
18:42		0-5	-5	2 IBINE AYO S 2pt FG in the paint, driving layup made (5)
18:42				5 JENKINS D assist (2)
18:25	0 SCHUMACHER A turnover lost ball (1)			2 IBINE AYO S steal (1)
18:25	0 SCHUMACHER A foul drawn (1)			2 IBINE AYO S foul offensive (1 - 1)
18:25				2 IBINE AYO S turnover offensive (1)
18:19	11 GRIGSBY R 2pt FG from turnover outside the paint, pull up jump shot missed			
18:16				2 IBINE AYO S defensive rebound (2)
18:11				5 JENKINS D 3pt FG , jump shot missed
18:08				5 JENKINS D offensive rebound (1)
18:07		0-7	-7	5 JENKINS D 2pt FG second chance in the paint, layup made (2)
17:53	5 TYSON C 3pt FG , jump shot missed			
17:46				1 CLAYTON JR. W defensive rebound (1)
17:41		0-10	-10	5 JENKINS D 3pt FG , jump shot made (5)
17:41				1 CLAYTON JR. W assist (1)
17:39	Timeout 30 Sec			
17:25	0 SCHUMACHER A foul drawn (2)			1 CLAYTON JR. W foul shooting (1 - 2)
17:25	0 SCHUMACHER A free throw 1 - 2 missed			
17:25	offensive dead ball rebound (1)			
17:25	0 SCHUMACHER A free throw 2 - 2 missed			
17:24	0 SCHUMACHER A offensive rebound (1)			
17:23	0 SCHUMACHER A 2pt FG second chance in the paint, layup made (2)	2-10	-8	
17:10				1 CLAYTON JR. W 3pt FG , jump shot missed
17:07				2 IBINE AYO S offensive rebound (3)
17:05		2-12	-10	2 IBINE AYO S 2pt FG second chance outside the paint, pull up jump shot made (7)
17:05				5 JENKINS D assist (3)
16:48	25 CHATFIELD B 3pt FG , jump shot missed			
16:45				2 IBINE AYO S defensive rebound (4)
16:42		2-14	-12	13 JOSEPH N 2pt FG fast break in the paint, layup made (2)
16:42				5 JENKINS D assist (4)
16:19	11 GRIGSBY R 3pt FG , jump shot missed			
16:16	15 UDENYI E offensive rebound (2)			
16:12	15 UDENYI E 2pt FG second chance in the paint, hook shot missed			



Official Basketball Play by Play - First Half
Iona at Seattle U
 12/23/22 SimpliFi Arena at Stan Sheriff Center, Honolulu
 2022-23 Men's Basketball

Game Time: 11:30 AM
 Game Duration: 2:18

Officials: Don Daily, Nate Harris, Ryan Wells

Game Time	Sea	Score	Diff	Iona
16:10	offensive rebound (4)			
16:10	0 SCHUMACHER A substitution out			
16:10	11 GRIGSBY R substitution out			
16:10	25 CHATFIELD B substitution out			
16:10	21 RAJKOMĆ V substitution in			
16:10	33 WILLIAMSON K substitution in			
16:10	35 LEVIS M substitution in			
16:10				2 IBINE AYO S substitution out
16:10				55 SHEMA O substitution out
16:10				11 SLAZINSKI Q substitution in
16:10				23 JEFFERSON M substitution in
15:53	21 RAJKOMĆ V 3pt FG second chance, jump shot missed			
15:50	33 WILLIAMSON K offensive rebound (1)			
15:48	33 WILLIAMSON K 2pt FG second chance in the paint, layup blocked			
15:48				13 JOSEPH N block (1)
15:45	33 WILLIAMSON K offensive rebound (2)			
15:43	5 TYSON C 3pt FG second chance, jump shot missed			
15:39				13 JOSEPH N defensive rebound (1)
15:38	35 LEVIS M steal (1)			5 JENKINS D turnover lost ball (1)
15:37	35 LEVIS M foul drawn (1)			1 CLAYTON JR. W foul personal (2 - 3)
15:37	Timeout media			
15:37				1 CLAYTON JR. W substitution out
15:37				3 DAVIS C substitution in
15:22	15 UDENYE E 2pt FG from turnover outside the paint, jump shot missed			
15:18				23 JEFFERSON M defensive rebound (1)
15:17				23 JEFFERSON M turnover out of bounds (1)
15:17	15 UDENYE E substitution out			
15:17	11 GRIGSBY R substitution in			
15:11	35 LEVIS M turnover bad pass (1)			13 JOSEPH N steal (1)
15:08		2-16	-14	13 JOSEPH N 2pt FG fast break from turnover in the paint, dunk, made (4)
14:43	35 LEVIS M 3pt FG, jump shot missed			
14:40				11 SLAZINSKI Q defensive rebound (1)
14:34				13 JOSEPH N 3pt FG, jump shot missed
14:31	defensive rebound (7)			
14:30				5 JENKINS D substitution out
14:30				12 BROOKSHIRE A substitution in
14:20	5 TYSON C 3pt FG, jump shot made (3)	5-16	-11	
14:20	33 WILLIAMSON K assist (1)			
14:03				13 JOSEPH N 2pt FG in the paint, layup blocked
14:03	33 WILLIAMSON K block (1)			
14:00	11 GRIGSBY R defensive rebound (1)			
13:39	33 WILLIAMSON K turnover bad pass (1)			3 DAVIS C steal (1)
13:35		5-18	-13	3 DAVIS C 2pt FG fast break from turnover in the paint, layup made (2)
13:14	5 TYSON C 3pt FG, jump shot missed			
13:11				11 SLAZINSKI Q defensive rebound (2)
13:07				12 BROOKSHIRE A turnover travel (1)
13:07	33 WILLIAMSON K substitution out			
13:07	15 UDENYE E substitution in			



Official Basketball Play by Play - First Half
Iona at Seattle U
 12/23/22 SimpliFi Arena at Stan Sheriff Center, Honolulu
 2022-23 Men's Basketball

Game Time: 11:30 AM
 Game Duration: 2:18

Officials: Don Daily, Nate Harris, Ryan Wells

Game Time	Sea	Score	Diff	Iona
13:07				13 JOSEPH N substitution out
13:07				55 SHEMA O substitution in
12:56	15 UDENYI E 2pt FG from turnover in the paint, driving layup made (2)	7-18	-11	
12:26		7-20	-13	55 SHEMA O 2pt FG outside the paint, jump shot made (2)
12:01	21 RAJKOMĆ V 2pt FG in the paint, hook shot missed			
11:59				11 SLAZINSKI Q defensive rebound (3)
11:32				3 DAMS C 2pt FG in the paint, pull up jump shot missed
11:29	15 UDENYI E defensive rebound (3)			
11:21	15 UDENYI E 2pt FG in the paint, layup missed			
11:18				55 SHEMA O defensive rebound (2)
11:14				12 BROOKSHIRE A 2pt FG in the paint, layup blocked
11:14	11 GRIGSBY R block (1)			
11:13				offensive rebound (14)
11:13	Timeout media			
11:13	15 UDENYI E substitution out			
11:13	35 LEVIS M substitution out			
11:13	0 SCHUMACHER A substitution in			
11:13	25 CHATFIELD B substitution in			
11:13				11 SLAZINSKI Q substitution out
11:13				23 JEFFERSON M substitution out
11:13				5 JENKINS D substitution in
11:13				13 JOSEPH N substitution in
11:03				12 BROOKSHIRE A substitution out
11:03				23 JEFFERSON M substitution in
11:01				turnover (5)
10:49	25 CHATFIELD B 3pt FG from turnover, jump shot made (3)	10-20	-10	
10:49	11 GRIGSBY R assist (1)			
10:25		10-22	-12	13 JOSEPH N 2pt FG outside the paint, pull up jump shot made (6)
10:25				5 JENKINS D assist (5)
10:06	11 GRIGSBY R foul drawn (1)			23 JEFFERSON M foul shooting (1 - 4)
10:06	11 GRIGSBY R free throw 1 - 2 missed			
10:06	offensive dead ball rebound (2)			
10:06				3 DAMS C substitution out
10:06				23 JEFFERSON M substitution out
10:06				2 IBINE AYO S substitution in
10:06				4 WEISS P substitution in
10:06	11 GRIGSBY R free throw 2 - 2 missed			
10:05				13 JOSEPH N defensive rebound (2)
09:50				5 JENKINS D 3pt FG , jump shot missed
09:47	0 SCHUMACHER A defensive rebound (2)			
09:43	25 CHATFIELD B 2pt FG fast break in the paint, dunk, made (5)	12-22	-10	
09:43	0 SCHUMACHER A assist (1)			
09:29	0 SCHUMACHER A foul drawn (3)			4 WEISS P foul offensive (1 - 5)
09:29				4 WEISS P turnover offensive (1)
09:29	11 GRIGSBY R substitution out			
09:29	15 UDENYI E substitution in			
09:29				4 WEISS P substitution out
09:29				3 DAMS C substitution in
09:05	5 TYSON C 2pt FG from turnover in the paint, layup blocked			



Official Basketball Play by Play - First Half
Iona at Seattle U
 12/23/22 SimpliFi Arena at Stan Sheriff Center, Honolulu
 2022-23 Men's Basketball

Game Time: 11:30 AM
 Game Duration: 2:18

Officials: Don Daily, Nate Harris, Ryan Wells

Game Time	Sea	Score	Diff	Iona
09:05				55 SHEMA O block (1)
09:01				3 DAVIS C defensive rebound (1)
08:55	5 TYSON C foul personal (1 - 1)			13 JOSEPH N foul drawn (1)
08:55	5 TYSON C substitution out			
08:55	11 GRIGSBY R substitution in			
08:49				55 SHEMA O 3pt FG , jump shot missed
08:46	11 GRIGSBY R defensive rebound (2)			
08:40				55 SHEMA O substitution out
08:40				11 SLAZINSKI Q substitution in
08:34	11 GRIGSBY R turnover bad pass (1)			
08:24	0 SCHUMACHER A foul shooting (1 - 2)			13 JOSEPH N foul drawn (2)
08:24		12-23	-11	13 JOSEPH N free throw 1 - 2 made (7)
08:24		12-24	-12	13 JOSEPH N free throw 2 - 2 made (8)
08:24	21 RAJKOMĆ V foul drawn (1)			3 DAVIS C foul personal (1 - 6)
08:10	11 GRIGSBY R 3pt FG , jump shot made (3)	15-24	-9	
08:10	25 CHATFIELD B assist (1)			
08:04				Timeout 30 Sec
08:04	Timeout media			
08:04	0 SCHUMACHER A substitution out			
08:04	21 RAJKOMĆ V substitution out			
08:04	5 TYSON C substitution in			
08:04	35 LEVIS M substitution in			
08:04				13 JOSEPH N substitution out
08:04				55 SHEMA O substitution in
07:49	jump ball situation			
07:49	25 CHATFIELD B steal (1)			2 IBINE AYO S turnover lost ball (2)
07:41	5 TYSON C 2pt FG from turnover in the paint, layup made (5)	17-24	-7	
07:41	11 GRIGSBY R assist (2)			
07:32		17-27	-10	11 SLAZINSKI Q 3pt FG , jump shot made (3)
07:05	11 GRIGSBY R foul drawn (2)			2 IBINE AYO S foul personal (2 - 7)
07:05				2 IBINE AYO S substitution out
07:05				23 JEFFERSON M substitution in
07:05	11 GRIGSBY R 1&1 free throw 1 missed			
07:04				11 SLAZINSKI Q defensive rebound (4)
06:50				3 DAVIS C 2pt FG outside the paint, pull up jump shot missed
06:47	11 GRIGSBY R defensive rebound (3)			
06:41	11 GRIGSBY R turnover lost ball (2)			11 SLAZINSKI Q steal (1)
06:37				5 JENKINS D 2pt FG from turnover in the paint, driving layup missed
06:32	15 UDENYE defensive rebound (4)			
06:23	5 TYSON C 2pt FG in the paint, driving layup missed			
06:21				55 SHEMA O defensive rebound (3)
06:09				55 SHEMA O 3pt FG , jump shot missed
06:07	defensive rebound (14)			
06:07	11 GRIGSBY R substitution out			
06:07	0 SCHUMACHER A substitution in			
06:07				55 SHEMA O substitution out
06:07				13 JOSEPH N substitution in
05:42	5 TYSON C foul drawn (1)			23 JEFFERSON M foul personal (2 - 8)
05:42				23 JEFFERSON M substitution out
05:42				4 WEISS P substitution in



Iona at Seattle U

12/23/22 SimpliFi Arena at Stan Sheriff Center, Honolulu
2022-23 Men's Basketball

Officials: Don Daily, Nate Harris, Ryan Wells

Game Time	Sea	Score	Diff	Iona
05:42	5 TYSON C 1&1 free throw 1 missed			
05:42				13 JOSEPH N defensive rebound (3)
05:22	25 CHATFIELD B foul shooting (1 - 3)			13 JOSEPH N foul drawn (3)
05:22				13 JOSEPH N free throw 1 - 2 missed
05:22				offensive dead ball rebound (1)
05:22	25 CHATFIELD B substitution out			
05:22	33 WILLIAMSON K substitution in			
05:22				13 JOSEPH N free throw 2 - 2 missed
05:21	5 TYSON C defensive rebound (1)			
05:11	15 UDENYI E 2pt FG in the paint, layup made (4)	19-27	-8	
05:11	0 SCHUMACHER A assist (2)			
04:51		19-29	-10	13 JOSEPH N 2pt FG in the paint, hook shot made (10)
04:51				3 DAMS C assist (1)
04:45	15 UDENYI E foul offensive (1 - 4)			3 DAMS C foul drawn (1)
04:45	15 UDENYI E turnover offensive (1)			
04:28				11 SLAZINSKI Q 3pt FG from turnover, jump shot missed
04:25	5 TYSON C defensive rebound (2)			
04:16	35 LEVIS M 2pt FG in the paint, driving layup made (2)	21-29	-8	
03:56				5 JENKINS D 2pt FG in the paint, driving layup missed
03:54	33 WILLIAMSON K defensive rebound (3)			
03:50	5 TYSON C 2pt FG in the paint, layup blocked			
03:50				13 JOSEPH N block (2)
03:50	offensive rebound (18)			
03:50				Timeout media
03:50				11 SLAZINSKI Q substitution out
03:50				55 SHEMA O substitution in
03:49	5 TYSON C foul drawn (2)			4 WEISS P foul shooting (2 - 9)
03:49	5 TYSON C free throw fast break 1 - 2 made (6)	22-29	-7	
03:49	5 TYSON C free throw fast break 2 - 2 made (7)	23-29	-6	
03:44	33 WILLIAMSON K foul personal (1 - 5)			5 JENKINS D foul drawn (1)
03:40	33 WILLIAMSON K foul drawn (1)			5 JENKINS D foul offensive (1 - 10)
03:40				5 JENKINS D turnover offensive (2)
03:09	turnover shot clock (7)			
02:52	0 SCHUMACHER A foul drawn (4)			5 JENKINS D foul offensive (2 - 11)
02:52				5 JENKINS D turnover offensive (3)
02:52				5 JENKINS D substitution out
02:52				12 BROOKSHIRE A substitution in
02:40	33 WILLIAMSON K turnover lost ball (2)			13 JOSEPH N steal (2)
02:20				13 JOSEPH N turnover travel (1)
02:20	35 LEVIS M foul drawn (2)			12 BROOKSHIRE A foul personal (1 - 12)
02:20	35 LEVIS M free throw fast break 1 - 2 made (3)	24-29	-5	
02:20	35 LEVIS M free throw fast break 2 - 2 made (4)	25-29	-4	
02:20	33 WILLIAMSON K substitution out			
02:20	25 CHATFIELD B substitution in			
02:05				4 WEISS P 3pt FG , jump shot missed
02:02	25 CHATFIELD B defensive rebound (1)			
01:55	0 SCHUMACHER A 2pt FG outside the paint, pull up jump shot missed			
01:52				55 SHEMA O defensive rebound (4)
01:41	15 UDENYI E steal (1)			13 JOSEPH N turnover lost ball (2)
01:29	15 UDENYI E 2pt FG from turnover in the paint, layup missed			



Official Basketball Play by Play - First Half

Iona at Seattle U

12/23/22 SimpliFi Arena at Stan Sheriff Center, Honolulu
2022-23 Men's Basketball

Game Time: 11:30 AM

Game Duration: 2:18

Officials: Don Daily, Nate Harris, Ryan Wells

Game Time	Sea	Score	Diff	Iona
01:27				55 SHEMA O defensive rebound (5)
01:25	35 LEVIS M foul personal (1 - 6)			3 DAMS C foul drawn (2)
01:17				3 DAMS C 2pt FG in the paint, driving layup blocked
01:17	25 CHATFIELD B block (1)			
01:13	35 LEVIS M defensive rebound (1)			
01:08	0 SCHUMACHER A 2pt FG in the paint, driving layup made (4)	27-29	-2	
00:34				12 BROOKSHIRE A 2pt FG in the paint, driving layup missed
00:33	5 TYSON C defensive rebound (3)			
00:04	25 CHATFIELD B 2pt FG in the paint, layup made (7)	29-29	0	
00:04	5 TYSON C assist (1)			
END OF PERIOD				
Sea 29-29 Iona				



Iona at Seattle U

12/23/22 SimpliFi Arena at Stan Sheriff Center, Honolulu
2022-23 Men's Basketball

Officials: Don Daily, Nate Harris, Ryan Wells

Iona - 29

NO.	Name	Min	FG			Rebounds			Fouls		TP	AS	TO	ST	Blocks		+/-
			M-A	3P	FT	OR	DR	TOT	PF	FD					BS	BA	
2	Sadiku Ibine Ayo	F 06:51	3-3	1-1	0-0	1	3	4	2	0	7	0	2	1	0	0	10
13	Nelly Joseph	F 16:09	4-6	0-1	2-4	0	3	3	0	3	10	0	2	2	2	1	-1
55	Osborn Shema	F 14:04	1-4	0-2	0-0	0	5	5	0	0	2	0	0	0	1	0	2
1	Walter Clayton Jr.	G 04:23	0-1	0-1	0-0	0	1	1	2	0	0	1	0	0	0	0	12
5	Daniss Jenkins	G 13:51	2-6	1-3	0-0	1	0	1	2	1	5	5	3	0	0	0	7
11	Quinn Slazinski	09:47	1-2	1-2	0-0	0	4	4	0	0	3	0	0	1	0	0	-1
23	Michael Jefferson	07:17	0-0	0-0	0-0	0	1	1	2	0	0	0	1	0	0	0	0
3	Cruz Davis	15:00	1-4	0-0	0-0	0	1	1	1	2	2	1	0	1	0	1	-10
12	Anton Brookshire	06:19	0-2	0-0	0-0	0	0	0	1	0	0	0	1	0	0	1	-7
4	Parker Weiss	06:19	0-1	0-1	0-0	0	0	0	2	0	0	0	1	0	0	0	-12
Team						1	0	1			0		1				
Totals			12-29	3-11	2-4	3	18	21	12	6	29	7	11	5	3	3	0

Shooting By Period		
1st FG%	12-29	41.4%
3PT%	3-11	27.3%
FT%	2-4	50%
GM FG%	12-29	41.4%
3PT%	3-11	27.3%
FT%	2-4	50.0%

Dead Ball Rebounds: 1, 0

Technical Fouls: NONE

Seattle U - 29

NO.	Name	Min	FG			Rebounds			Fouls		TP	AS	TO	ST	Blocks		+/-
			M-A	3P	FT	OR	DR	TOT	PF	FD					BS	BA	
15	Emeka Udenyi	F 16:06	2-6	0-0	0-0	1	3	4	1	0	4	0	1	1	0	0	-2
25	Brandton Chatfield	F 12:01	3-4	1-2	0-0	0	1	1	1	0	7	1	0	1	1	0	-5
0	Alex Schumacher	G 13:06	2-4	0-0	0-2	1	1	2	1	4	4	2	1	0	0	0	2
5	Cameron Tyson	G 19:09	2-9	1-5	2-3	0	3	3	1	2	7	1	0	0	0	2	-1
11	Riley Grigsby	G 12:26	1-3	1-2	0-3	0	3	3	0	2	3	2	2	0	1	0	-10
21	Viktor Rajković	08:06	0-2	0-1	0-0	0	0	0	0	1	0	0	0	0	0	0	3
33	Kobe Williamson	06:05	0-1	0-0	0-0	2	1	3	1	1	0	1	2	0	1	1	5
35	Matthew Levis	13:01	1-2	0-1	2-2	0	1	1	1	2	4	0	1	1	0	0	8
Team						2	2	4			0		1				
Totals			11-31	3-11	4-10	6	15	21	6	12	29	7	8	3	3	3	0

Shooting By Period		
1st FG%	11-31	35.5%
3PT%	3-11	27.3%
FT%	4-10	40%
GM FG%	11-31	35.5%
3PT%	3-11	27.3%
FT%	4-10	40.0%

Dead Ball Rebounds: 2, 0

Technical Fouls: NONE

	Iona	Sea
Biggest lead	14 (1 st 15:08)	0 (1 st 20:00)
Best Scoring Run	10 (1 st 17:41)	10 (1 st 0:04)
Lead Changes	0	
Times Tied	1	
Time with Lead	19:42	00:00

Points from	Iona	Sea
Turnovers	6	9
Paint	12	16
Second Chance	4	4
Fast Breaks	6	6
Bench	5	4

	Period by Period Scoring		
	1st	2nd	TOT
Iona	29	54	83
Sea	29	43	72



Period 2

Period Starters:

Sea	0 Schumacher A	5 Tyson C	11 Grigsby R	15 Udenyi E	25 Chatfield B
Iona	1 Clayton Jr. W	2 Ibine Ayo S	5 Jenkins D	13 Joseph N	55 Shema O

Game Time	Sea	Score	Diff	Iona
20:00	35 LEVIS M substitution out			
20:00	11 GRIGSBY R substitution in			
20:00				3 DAVIS C substitution out
20:00				4 WEISS P substitution out
20:00				12 BROOKSHIRE A substitution out
20:00				1 CLAYTON JR. W substitution in
20:00				2 IBINE AYO S substitution in
20:00				5 JENKINS D substitution in
19:47		29-32	-3	55 SHEMA O 3pt FG , jump shot made (5)
19:47				5 JENKINS D assist (6)
19:26	11 GRIGSBY R 2pt FG in the paint, layup missed			
19:23				2 IBINE AYO S defensive rebound (5)
19:11		29-35	-6	5 JENKINS D 3pt FG , jump shot made (8)
19:11				55 SHEMA O assist (1)
19:02	Timeout 30 Sec			
19:02	0 SCHUMACHER A substitution out			
19:02	11 GRIGSBY R substitution out			
19:02	25 CHATFIELD B substitution out			
19:02	21 RAJKOVIC V substitution in			
19:02	33 WILLIAMSON K substitution in			
19:02	35 LEVIS M substitution in			
18:38	15 UDENYI E 2pt FG in the paint, layup missed			
18:35	15 UDENYI E offensive rebound (5)			
18:35	15 UDENYI E 2pt FG second chance in the paint, layup missed			
18:33				13 JOSEPH N defensive rebound (4)
18:32	21 RAJKOVIC V foul shooting (1 - 1)			55 SHEMA O foul drawn (1)
18:32		29-36	-7	55 SHEMA O free throw fast break 1 - 2 made (6)
18:32		29-37	-8	55 SHEMA O free throw fast break 2 - 2 made (7)
18:07	15 UDENYI E foul drawn (1)			1 CLAYTON JR. W foul shooting (3 - 1)
18:07	15 UDENYI E free throw 1 - 2 missed			
18:07	offensive dead ball rebound (3)			
18:07	15 UDENYI E free throw 2 - 2 missed			
18:07				55 SHEMA O defensive rebound (6)
17:54	15 UDENYI E foul shooting (2 - 2)			5 JENKINS D foul drawn (2)
17:54		29-38	-9	5 JENKINS D free throw 1 - 2 made (9)
17:54	15 UDENYI E substitution out			
17:54	11 GRIGSBY R substitution in			
17:54				1 CLAYTON JR. W substitution out
17:54				3 DAVIS C substitution in
17:54		29-39	-10	5 JENKINS D free throw 2 - 2 made (10)
17:40	33 WILLIAMSON K foul drawn (2)			13 JOSEPH N foul personal (1 - 2)
17:36	33 WILLIAMSON K 3pt FG , jump shot blocked			
17:36				55 SHEMA O block (2)
17:32				55 SHEMA O defensive rebound (7)



Official Basketball Play by Play - Second Half
Iona at Seattle U
 12/23/22 SimpliFi Arena at Stan Sheriff Center, Honolulu
 2022-23 Men's Basketball

Game Time: 11:30 AM
 Game Duration: 2:18

Officials: Don Daily, Nate Harris, Ryan Wells

Game Time	Sea	Score	Diff	Iona
17:29		29-41	-12	55 SHEMA O 2pt FG fast break in the paint, dunk, made (9)
17:29				2 IBINE AYO S assist (1)
17:16	21 RAJKOMĆ V foul drawn (2)			3 DAVIS C foul shooting (2 - 3)
17:16	21 RAJKOMĆ V free throw 1 - 2 made (1)	30-41	-11	
17:16	5 TYSON C substitution out			
17:16	33 WILLIAMSON K substitution out			
17:16	0 SCHUMACHER A substitution in			
17:16	25 CHATFIELD B substitution in			
17:16	21 RAJKOMĆ V free throw 2 - 2 made (2)	31-41	-10	
17:05		31-43	-12	13 JOSEPH N 2pt FG in the paint, hook shot made (12)
17:05				5 JENKINS D assist (7)
17:05	25 CHATFIELD B foul shooting (2 - 3)			13 JOSEPH N foul drawn (4)
17:05				13 JOSEPH N free throw 1 - 1 missed
17:04	11 GRIGSBY R defensive rebound (4)			
16:49	0 SCHUMACHER A foul drawn (5)			5 JENKINS D foul shooting (3 - 4)
16:49	0 SCHUMACHER A free throw 1 - 2 made (5)	32-43	-11	
16:49	0 SCHUMACHER A free throw 2 - 2 made (6)	33-43	-10	
16:38		33-45	-12	5 JENKINS D 2pt FG outside the paint, pull up jump shot made (12)
16:23	0 SCHUMACHER A 2pt FG in the paint, driving layup blocked			
16:23				55 SHEMA O block (3)
16:20				13 JOSEPH N defensive rebound (5)
16:02				5 JENKINS D 2pt FG in the paint, layup missed
16:00				2 IBINE AYO S offensive rebound (6)
15:59				2 IBINE AYO S 2pt FG second chance outside the paint, jump shot missed
15:57	25 CHATFIELD B defensive rebound (2)			
15:41	0 SCHUMACHER A 2pt FG in the paint, driving layup made (8)	35-45	-10	
15:41	0 SCHUMACHER A foul drawn (6)			55 SHEMA O foul shooting (1 - 5)
15:41				Timeout media
15:41	35 LEVIS M substitution out			
15:41	5 TYSON C substitution in			
15:41				5 JENKINS D substitution out
15:41				55 SHEMA O substitution out
15:41				11 SLAZINSKI Q substitution in
15:41				12 BROOKSHIRE A substitution in
15:41	0 SCHUMACHER A free throw 1 - 1 made (9)	36-45	-9	
15:26	0 SCHUMACHER A foul shooting (2 - 4)			13 JOSEPH N foul drawn (5)
15:26		36-46	-10	13 JOSEPH N free throw 1 - 2 made (13)
15:26		36-47	-11	13 JOSEPH N free throw 2 - 2 made (14)
15:10	5 TYSON C 3pt FG , jump shot missed			
15:06	0 SCHUMACHER A offensive rebound (3)			
15:04	0 SCHUMACHER A 2pt FG second chance in the paint, layup blocked			
15:04				11 SLAZINSKI Q block (1)
15:01				3 DAVIS C defensive rebound (2)
14:41	0 SCHUMACHER A steal (1)			11 SLAZINSKI Q turnover lost ball (1)
14:32	0 SCHUMACHER A turnover lost ball (2)			2 IBINE AYO S steal (2)
14:26	25 CHATFIELD B foul shooting (3 - 5)			13 JOSEPH N foul drawn (6)
14:26				13 JOSEPH N free throw fast break 1 - 2 missed
14:26				offensive dead ball rebound (2)



Official Basketball Play by Play - Second Half
Iona at Seattle U
 12/23/22 SimpliFi Arena at Stan Sheriff Center, Honolulu
 2022-23 Men's Basketball

Game Time: 11:30 AM
 Game Duration: 2:18

Officials: Don Daily, Nate Harris, Ryan Wells

Game Time	Sea	Score	Diff	Iona
14:26	0 SCHUMACHER A substitution out			
14:26	35 LEVIS M substitution in			
14:26		36-48	-12	13 JOSEPH N free throw fast break 2 - 2 made (15)
14:07	11 GRIGSBY R 3pt FG , jump shot missed			
14:06	offensive dead ball rebound (4)			
14:06	jump ball situation			
14:04	35 LEVIS M foul drawn (3)			13 JOSEPH N foul personal (2 - 6)
13:57	5 TYSON C 2pt FG second chance in the paint, driving layup missed			
13:55				11 SLAZINSKI Q defensive rebound (5)
13:52				3 DAVS C 3pt FG , jump shot missed
13:49				11 SLAZINSKI Q offensive rebound (6)
13:44		36-50	-14	3 DAVS C 2pt FG second chance in the paint, layup made (4)
13:33	Timeout 30 Sec			
13:26	35 LEVIS M foul offensive (2 - 6)			3 DAVS C foul drawn (3)
13:26	35 LEVIS M turnover offensive (2)			
13:26	21 RAJKOVIĆ V substitution out			
13:26	15 UDENYI E substitution in			
13:16				11 SLAZINSKI Q 3pt FG from turnover, jump shot missed
13:13	5 TYSON C defensive rebound (4)			
12:56	25 CHATFIELD B 3pt FG , jump shot made (10)	39-50	-11	
12:56	35 LEVIS M assist (1)			
12:40		39-52	-13	11 SLAZINSKI Q 2pt FG in the paint, jump shot made (5)
12:29	11 GRIGSBY R foul drawn (3)			2 IBINE AYO S foul personal (3 - 7)
12:29	5 TYSON C substitution out			
12:29	0 SCHUMACHER A substitution in			
12:29	11 GRIGSBY R 1&1 free throw 1 made (4)	40-52	-12	
12:29	11 GRIGSBY R 1&1 free throw 2 missed			
12:28				13 JOSEPH N defensive rebound (6)
12:10				13 JOSEPH N 2pt FG in the paint, hook shot missed
12:07	25 CHATFIELD B defensive rebound (3)			
11:44	35 LEVIS M 3pt FG , jump shot missed			
11:41				13 JOSEPH N defensive rebound (7)
11:37		40-54	-14	3 DAVS C 2pt FG fast break in the paint, layup made (6)
11:37				12 BROOKSHIRE A assist (1)
11:27	15 UDENYI E turnover lost ball (2)			
11:26				Timeout media
11:26				3 DAVS C substitution out
11:26				12 BROOKSHIRE A substitution out
11:26				1 CLAYTON JR. W substitution in
11:26				5 JENKINS D substitution in
11:26	11 GRIGSBY R substitution out			
11:26	5 TYSON C substitution in			
11:17				1 CLAYTON JR. W turnover bad pass (1)
11:01	5 TYSON C foul drawn (3)			13 JOSEPH N foul shooting (3 - 8)
11:01	5 TYSON C free throw 1 - 3 missed			
11:01	offensive dead ball rebound (5)			
11:01	5 TYSON C free throw 2 - 3 made (8)	41-54	-13	
11:01	5 TYSON C free throw 3 - 3 made (9)	42-54	-12	
10:51				1 CLAYTON JR. W 3pt FG , jump shot missed
10:48				1 CLAYTON JR. W offensive rebound (2)



Official Basketball Play by Play - Second Half
Iona at Seattle U
 12/23/22 SimpliFi Arena at Stan Sheriff Center, Honolulu
 2022-23 Men's Basketball

Game Time: 11:30 AM
 Game Duration: 2:18

Officials: Don Daily, Nate Harris, Ryan Wells

Game Time	Sea	Score	Diff	Iona
10:46				11 SLAZINSKI Q turnover travel (2)
10:36	5 TYSON C 3pt FG from turnover, jump shot missed			
10:33	35 LEVIS M offensive rebound (2)			
10:31	5 TYSON C 3pt FG from turnover second chance, jump shot made (12)	45-54	-9	
10:31	35 LEVIS M assist (2)			
10:31				Timeout 30 Sec
10:12				13 JOSEPH N 2pt FG in the paint, layup missed
10:11				5 JENKINS D offensive rebound (2)
10:11		45-56	-11	5 JENKINS D 2pt FG second chance in the paint, layup made (14)
10:01	0 SCHUMACHER A foul drawn (7)			11 SLAZINSKI Q foul personal (1 - 9)
10:01				11 SLAZINSKI Q substitution out
10:01				55 SHEMA O substitution in
10:01	0 SCHUMACHER A 1&1 free throw 1 made (10)	46-56	-10	
10:01	0 SCHUMACHER A 1&1 free throw 2 made (11)	47-56	-9	
09:43				55 SHEMA O 3pt FG , jump shot missed
09:40	defensive dead ball rebound (6)			
09:40	5 TYSON C foul drawn (4)			2 IBINE AYO S foul personal (4 - 10)
09:40	5 TYSON C free throw fast break 1 - 2 made (13)	48-56	-8	
09:40	25 CHATFIELD B substitution out			
09:40	33 WILLIAMSON K substitution in			
09:40				2 IBINE AYO S substitution out
09:40				23 JEFFERSON M substitution in
09:40	5 TYSON C free throw fast break 2 - 2 made (14)	49-56	-7	
09:29	15 UDENYE E foul shooting (3 - 7)			1 CLAYTON JR. W foul drawn (1)
09:29		49-57	-8	1 CLAYTON JR. W free throw 1 - 2 made (1)
09:29		49-58	-9	1 CLAYTON JR. W free throw 2 - 2 made (2)
09:29	0 SCHUMACHER A foul drawn (8)			23 JEFFERSON M foul personal (3 - 11)
09:29	0 SCHUMACHER A free throw fast break 1 - 2 missed			
09:29	offensive dead ball rebound (7)			
09:29	0 SCHUMACHER A free throw fast break 2 - 2 made (12)	50-58	-8	
09:12		50-60	-10	55 SHEMA O 2pt FG in the paint, dunk, made (11)
09:12				1 CLAYTON JR. W assist (2)
08:53	0 SCHUMACHER A foul drawn (9)			55 SHEMA O foul personal (2 - 12)
08:53	0 SCHUMACHER A free throw 1 - 2 made (13)	51-60	-9	
08:53	15 UDENYE E substitution out			
08:53	25 CHATFIELD B substitution in			
08:53	0 SCHUMACHER A free throw 2 - 2 made (14)	52-60	-8	
08:34				5 JENKINS D 2pt FG in the paint, driving layup missed
08:32	defensive rebound (29)			
08:19	5 TYSON C 2pt FG outside the paint, step back jump shot missed			
08:15				1 CLAYTON JR. W defensive rebound (3)
08:07	25 CHATFIELD B foul shooting (4 - 8)			13 JOSEPH N foul drawn (7)
08:07		52-61	-9	13 JOSEPH N free throw 1 - 2 made (16)
08:07	25 CHATFIELD B substitution out			
08:07	15 UDENYE E substitution in			
08:07				1 CLAYTON JR. W substitution out
08:07				3 DAVIS C substitution in
08:07		52-62	-10	13 JOSEPH N free throw 2 - 2 made (17)



Official Basketball Play by Play - Second Half
Iona at Seattle U
 12/23/22 SimpliFi Arena at Stan Sheriff Center, Honolulu
 2022-23 Men's Basketball

Game Time: 11:30 AM
 Game Duration: 2:18

Officials: Don Daily, Nate Harris, Ryan Wells

Game Time	Sea	Score	Diff	Iona
07:46	35 LEVIS M 2pt FG in the paint, floating jump shot missed			
07:45				defensive rebound (36)
07:45	Timeout media			
07:35				Timeout 30 Sec
07:27		52-64	-12	13 JOSEPH N 2pt FG in the paint, layup made (19)
07:27				5 JENKINS D assist (8)
07:06	0 SCHUMACHER A foul drawn (10)			3 DAVS C foul personal (3 - 13)
07:06	0 SCHUMACHER A free throw 1 - 2 missed			
07:06	offensive dead ball rebound (8)			
07:06	35 LEVIS M substitution out			
07:06	21 RAJKOVIĆ V substitution in			
07:06				3 DAVS C substitution out
07:06				1 CLAYTON JR. W substitution in
07:06	0 SCHUMACHER A free throw 2 - 2 made (15)	53-64	-11	
06:46				55 SHEMA O 3pt FG , jump shot missed
06:43	33 WILLIAMSON K defensive rebound (4)			
06:33	5 TYSON C 3pt FG , jump shot missed			
06:31	21 RAJKOVIĆ V offensive rebound (1)			
06:28	5 TYSON C foul drawn (5)			13 JOSEPH N foul shooting (4 - 14)
06:28	5 TYSON C free throw 1 - 3 made (15)	54-64	-10	
06:28	5 TYSON C free throw 2 - 3 made (16)	55-64	-9	
06:28				1 CLAYTON JR. W substitution out
06:28				13 JOSEPH N substitution out
06:28				23 JEFFERSON M substitution out
06:28				2 IBINE AYO S substitution in
06:28				3 DAVS C substitution in
06:28				11 SLAZINSKI Q substitution in
06:28	5 TYSON C free throw 3 - 3 made (17)	56-64	-8	
06:14	33 WILLIAMSON K foul personal (2 - 9)			5 JENKINS D foul drawn (3)
06:14				3 DAVS C substitution out
06:14				1 CLAYTON JR. W substitution in
06:14		56-65	-9	5 JENKINS D 1&1 free throw 1 made (15)
06:14		56-66	-10	5 JENKINS D 1&1 free throw 2 made (16)
05:58	5 TYSON C 2pt FG in the paint, driving layup blocked			
05:58				5 JENKINS D block (1)
05:55	33 WILLIAMSON K offensive rebound (5)			
05:47	15 UDENYE E 2pt FG second chance in the paint, layup blocked			
05:47				55 SHEMA O block (4)
05:42				5 JENKINS D defensive rebound (3)
05:39	0 SCHUMACHER A foul personal (3 - 10)			11 SLAZINSKI Q foul drawn (1)
05:39		56-67	-11	11 SLAZINSKI Q free throw fast break 1 - 2 made (6)
05:39	0 SCHUMACHER A substitution out			
05:39	35 LEVIS M substitution in			
05:39		56-68	-12	11 SLAZINSKI Q free throw fast break 2 - 2 made (7)
05:22	5 TYSON C 2pt FG in the paint, layup made (19)	58-68	-10	
04:59		58-70	-12	5 JENKINS D 2pt FG outside the paint, pull up jump shot made (18)
04:59				11 SLAZINSKI Q assist (1)
04:46	33 WILLIAMSON K 3pt FG , jump shot missed			
04:42	21 RAJKOVIĆ V offensive rebound (2)			
04:39	5 TYSON C 3pt FG second chance, jump shot missed			



Official Basketball Play by Play - Second Half
Iona at Seattle U
 12/23/22 SimpliFi Arena at Stan Sheriff Center, Honolulu
 2022-23 Men's Basketball

Game Time: 11:30 AM
 Game Duration: 2:18

Officials: Don Daily, Nate Harris, Ryan Wells

Game Time	Sea	Score	Diff	Iona
04:36				11 SLAZINSKI Q defensive rebound (7)
04:13				1 CLAYTON JR. W 3pt FG , jump shot missed
04:10	defensive rebound (34)			
04:10	15 UDENYI E substitution out			
04:10	33 WILLIAMSON K substitution out			
04:10	0 SCHUMACHER A substitution in			
04:10	25 CHATFIELD B substitution in			
03:57	25 CHATFIELD B turnover lost ball (1)			11 SLAZINSKI Q steal (2)
03:57	Timeout media			
03:57				55 SHEMA O substitution out
03:57				13 JOSEPH N substitution in
03:27				13 JOSEPH N 2pt FG from turnover in the paint, layup missed
03:24	25 CHATFIELD B defensive rebound (4)			
03:18	5 TYSON C foul drawn (6)			1 CLAYTON JR. W foul shooting (4 - 15)
03:18	5 TYSON C free throw 1 - 2 made (20)	59-70	-11	
03:18	5 TYSON C free throw 2 - 2 made (21)	60-70	-10	
03:08		60-72	-12	1 CLAYTON JR. W 2pt FG in the paint, layup made (4)
03:08	35 LEVIS M foul shooting (3 - 11)			1 CLAYTON JR. W foul drawn (2)
03:08		60-73	-13	1 CLAYTON JR. W free throw 1 - 1 made (5)
03:01	0 SCHUMACHER A foul drawn (11)			1 CLAYTON JR. W foul personal (5 - 16)
03:01				1 CLAYTON JR. W substitution out
03:01				3 DAVIS C substitution in
03:01	0 SCHUMACHER A free throw fast break 1 - 2 made (16)	61-73	-12	
03:01	0 SCHUMACHER A free throw fast break 2 - 2 made (17)	62-73	-11	
02:41	25 CHATFIELD B foul personal (5 - 12)			5 JENKINS D foul drawn (4)
02:41	25 CHATFIELD B substitution out			
02:41	33 WILLIAMSON K substitution in			
02:41				5 JENKINS D free throw 1 - 2 missed
02:41				offensive dead ball rebound (3)
02:41		62-74	-12	5 JENKINS D free throw 2 - 2 made (19)
02:41	35 LEVIS M foul drawn (4)			2 IBINE AYO S foul personal (5 - 17)
02:41	21 RAJKOMĆ V substitution out			
02:41	15 UDENYI E substitution in			
02:41				2 IBINE AYO S substitution out
02:41				23 JEFFERSON M substitution in
02:41	35 LEVIS M free throw fast break 1 - 2 made (5)	63-74	-11	
02:41	35 LEVIS M free throw fast break 2 - 2 made (6)	64-74	-10	
02:19		64-76	-12	13 JOSEPH N 2pt FG in the paint, driving layup made (21)
02:19	33 WILLIAMSON K foul shooting (3 - 13)			13 JOSEPH N foul drawn (8)
02:19	33 WILLIAMSON K substitution out			
02:19	21 RAJKOMĆ V substitution in			
02:19		64-77	-13	13 JOSEPH N free throw 1 - 1 made (22)
02:04	5 TYSON C 3pt FG , jump shot missed			
02:01				3 DAVIS C defensive rebound (3)
01:52				13 JOSEPH N 2pt FG in the paint, layup missed
01:49				23 JEFFERSON M offensive rebound (2)
01:48				5 JENKINS D 3pt FG second chance, jump shot missed
01:46	21 RAJKOMĆ V defensive rebound (3)			
01:46	21 RAJKOMĆ V foul drawn (3)			23 JEFFERSON M foul personal (4 - 18)
01:46	21 RAJKOMĆ V free throw fast break 1 - 2 made (3)	65-77	-12	
01:46				23 JEFFERSON M substitution out



Official Basketball Play by Play - Second Half
Iona at Seattle U
 12/23/22 SimpliFi Arena at Stan Sheriff Center, Honolulu
 2022-23 Men's Basketball

Game Time: 11:30 AM
 Game Duration: 2:18

Officials: Don Daily, Nate Harris, Ryan Wells

Game Time	Sea	Score	Diff	Iona
01:46				4 WEISS P substitution in
01:46	21 RAJKOMĆ V free throw fast break 2 - 2 made (4)	66-77	-11	
01:44	21 RAJKOMĆ V foul personal (2 - 14)			13 JOSEPH N foul drawn (9)
01:44		66-78	-12	13 JOSEPH N free throw fast break 1 - 2 made (23)
01:44				4 WEISS P substitution out
01:44				23 JEFFERSON M substitution in
01:44		66-79	-13	13 JOSEPH N free throw fast break 2 - 2 made (24)
01:34	0 SCHUMACHER A 3pt FG , jump shot missed			
01:31				11 SLAZINSKI Q defensive rebound (8)
01:04	21 RAJKOMĆ V steal (1)			13 JOSEPH N turnover lost ball (3)
00:50	5 TYSON C 2pt FG from turnover in the paint, layup made (23)	68-79	-11	
00:50	0 SCHUMACHER A assist (3)			
00:50	Timeout 60 Sec			
00:50				23 JEFFERSON M substitution out
00:50				4 WEISS P substitution in
00:39		68-81	-13	11 SLAZINSKI Q 2pt FG in the paint, driving layup made (9)
00:34	5 TYSON C foul drawn (7)			4 WEISS P foul personal (3 - 19)
00:34	5 TYSON C free throw fast break 1 - 2 missed			
00:34	offensive dead ball rebound (9)			
00:34	5 TYSON C free throw fast break 2 - 2 made (24)	69-81	-12	
00:26		69-83	-14	13 JOSEPH N 2pt FG in the paint, dunk, made (26)
00:26				11 SLAZINSKI Q assist (2)
00:18	0 SCHUMACHER A 2pt FG in the paint, layup blocked			
00:18				5 JENKINS D block (2)
00:17	offensive rebound (37)			
00:11	5 TYSON C 3pt FG second chance, jump shot made (27)	72-83	-11	
00:11	15 UDENYE E assist (1)			
END OF GAME				
Sea 72-83 Iona				



Officials: Don Daily, Nate Harris, Ryan Wells

Iona - 54

NO.	Name	Min	FG			Rebounds			Fouls		TP	AS	TO	ST	Blocks		+/-
			M-A	M-A	M-A	OR	DR	TOT	PF	FD					BS	BA	
2	Sadiku Ibine Ayo	F 14:07	0-1	0-0	0-0	1	1	2	3	0	0	1	0	1	0	0	11
13	Nelly Joseph	F 17:29	4-8	0-0	8-10	0	4	4	4	6	16	0	1	0	0	0	8
55	Osborn Shema	F 10:23	3-5	1-3	2-2	0	2	2	2	1	9	1	0	0	3	0	11
1	Walter Clayton Jr.	G 09:16	1-3	0-2	3-3	1	1	2	3	2	5	1	1	0	0	0	6
5	Daniss Jenkins	G 15:45	4-7	1-2	5-6	1	1	2	1	3	14	3	0	0	2	0	7
3	Cruz Davis	10:44	2-3	0-1	0-0	0	2	2	2	1	4	0	0	0	0	0	5
11	Quinn Slazinski	12:08	2-3	0-1	2-2	1	3	4	1	1	6	2	2	1	1	0	3
12	Anton Brookshire	04:15	0-0	0-0	0-0	0	0	0	0	0	0	1	0	0	0	0	4
23	Michael Jefferson	05:00	0-0	0-0	0-0	1	0	1	2	0	0	0	0	0	0	0	0
4	Parker Weiss	00:53	0-0	0-0	0-0	0	0	0	1	0	0	0	0	0	0	0	0
Team						0	1	1			0		0				
Totals			16-30	2-9	20-23	5	15	20	19	14	54	9	4	2	6	0	11

Shooting By Period		
2 nd FG%	16-30	53.3%
3PT%	2-9	22.2%
FT%	20-23	87%
GM FG%	16-30	53.3%
3PT%	2-9	22.2%
FT%	20-23	87.0%

Dead Ball Rebounds: 2, 0

Technical Fouls: NONE

Seattle U - 43

NO.	Name	Min	FG			Rebounds			Fouls		TP	AS	TO	ST	Blocks		+/-
			M-A	M-A	M-A	OR	DR	TOT	PF	FD					BS	BA	
15	Emeka Udenyi	F 13:17	0-3	0-0	0-2	1	0	1	2	1	0	1	1	0	0	1	-6
25	Brandton Chatfield	F 10:49	1-1	1-1	0-0	0	3	3	4	0	3	0	1	0	0	0	-2
0	Alex Schumacher	G 14:48	1-5	0-1	11-13	1	0	1	2	7	13	1	1	1	0	3	-3
5	Cameron Tyson	G 17:22	4-12	2-7	10-12	0	1	1	0	5	20	0	0	0	0	1	-11
11	Riley Grigsby	G 07:26	0-2	0-1	1-2	0	1	1	0	1	1	0	0	0	0	0	-11
21	Viktor Rajković	12:20	0-0	0-0	4-4	2	1	3	2	2	4	0	0	1	0	0	-7
33	Kobe Williamson	07:38	0-2	0-2	0-0	1	1	2	2	1	0	0	0	0	0	1	-10
35	Matthew Levis	16:20	0-2	0-1	2-2	1	0	1	2	2	2	2	1	0	0	0	-5
Team						1	2	3			0		0				
Totals			6-27	3-13	28-35	7	9	16	14	19	43	4	4	2	0	6	-11

Shooting By Period		
2 nd FG%	6-27	22.2%
3PT%	3-13	23.1%
FT%	28-35	80%
GM FG%	6-27	22.2%
3PT%	3-13	23.1%
FT%	28-35	80.0%

Dead Ball Rebounds: 6, 1

Technical Fouls: NONE

	Iona	Sea
Biggest lead	14 (2 nd 13:44)	0 (1 st 20:00)
Best Scoring Run	12 (2 nd 17:29)	5 (2 nd 10:31)
Lead Changes	1	
Times Tied	0	
Time with Lead	19:47	00:00

Points from	Iona	Sea
Turnovers	1	7
Paint	24	6
Second Chance	4	9
Fast Breaks	11	10
Bench	10	6

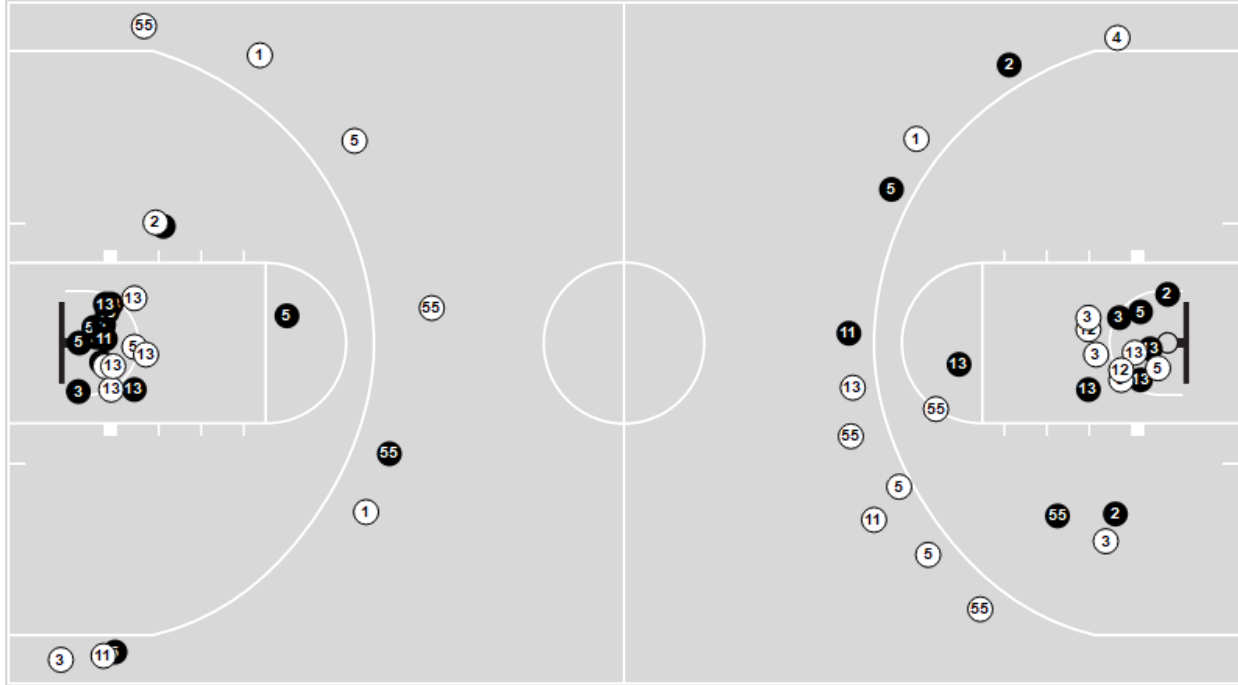
	Period by Period Scoring		
	1st	2nd	TOT
Iona	29	54	83
Sea	29	43	72



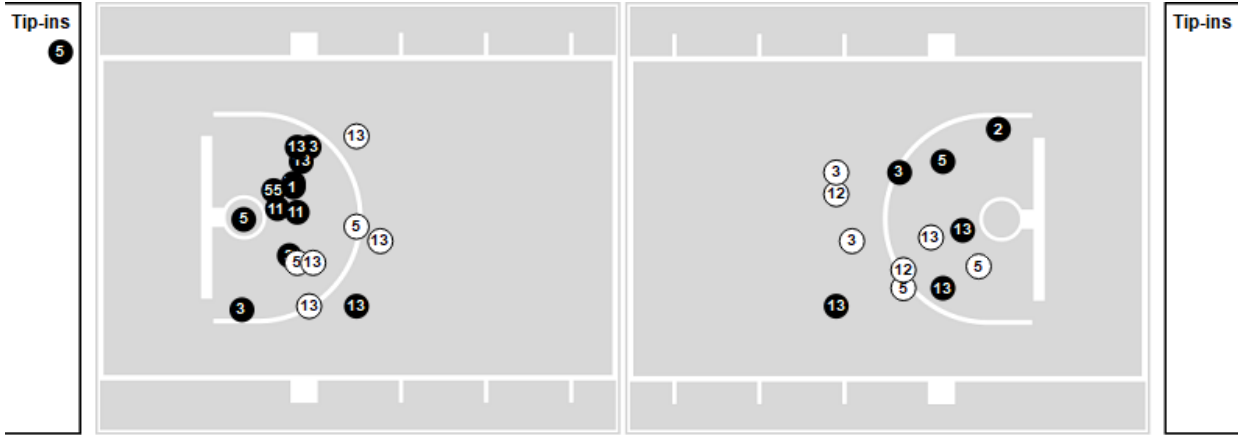
Officials: Don Daily, Nate Harris, Ryan Wells

Players => All ; FG Types => All ; Results => All ;
Iona

All Field Goals



Shots in the Paint



N Made **O** Missed **N** - Player Number

Iona	M/A	%
Field Goals	28/59	47
2 Points	23/39	59
3 Points	5/20	25
Free Throws	22/27	81

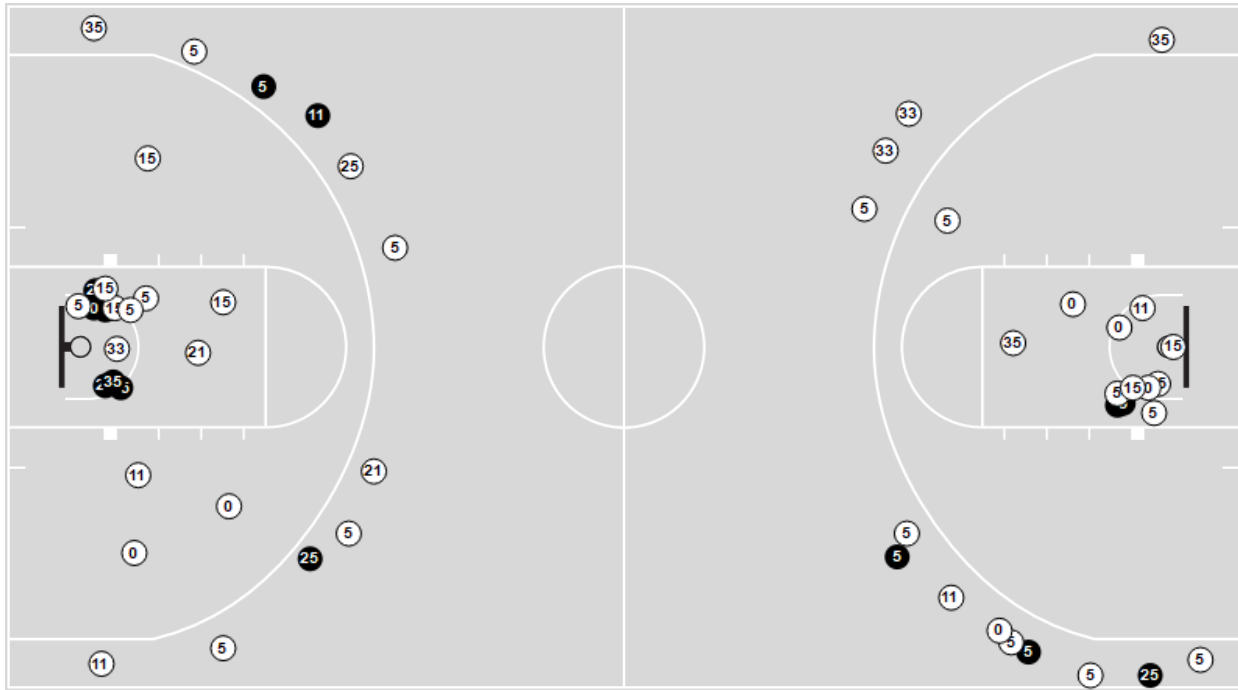
Iona	M/A	%
Points in the Paint	36 (18/31)	58
Fast Break Points	17 (12/13)	92
Second Chance Points	8 (4/6)	67
Effective FG%	52	



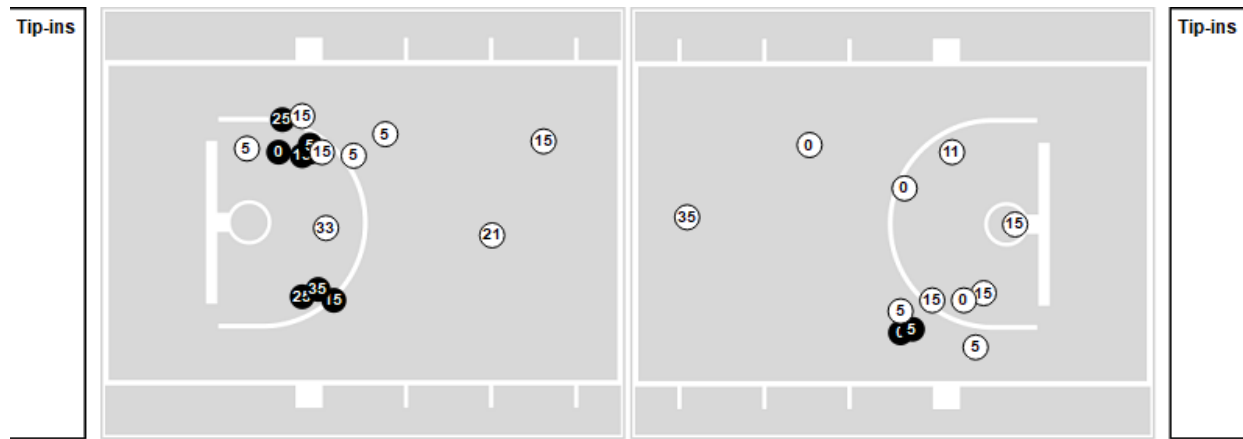
Players => All ; FG Types => All ; Results => All ;

Seattle U

All Field Goals



Shots in the Paint



N Made **N** Missed **N** - Player Number

Seattle U	M/A	%
Field Goals	17/58	29
2 Points	11/34	32
3 Points	6/24	25
Free Throws	32/45	71

Seattle U	M/A	%
Points in the Paint	22 (11/29)	38
Fast Break Points	16 (15/17)	88
Second Chance Points	13 (8/17)	47
Effective FG%	34	